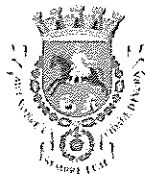


## CÂMARA MUNICIPAL DE ÉVORA

### 1. PRAÇA DO GIRALDO LADO IGREJA

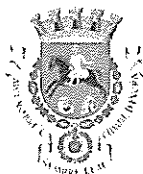




## CÂMARA MUNICIPAL DE ÉVORA

### 2. PRAÇA DO GIRALDO LADO BANCO PORTUGAL

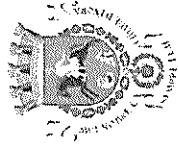




## CÂMARA MUNICIPAL DE ÉVORA

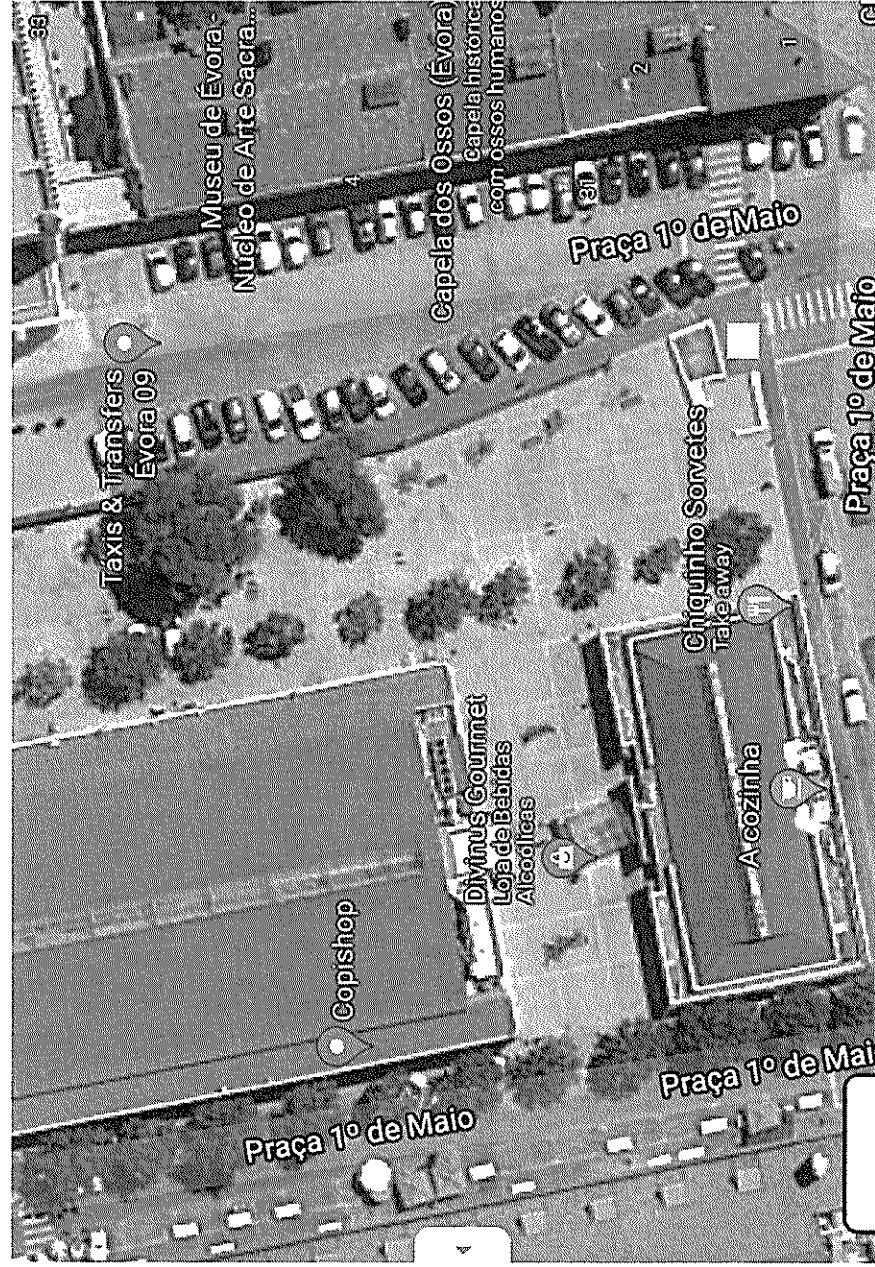
### **3. PORTA DO HOSPITAL**





## CÂMARA MUNICIPAL DE ÉVORA

### 4. PRAÇA 1º MAIO



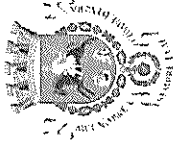




## CÂMARA MUNICIPAL DE ÉVORA

### 5. RUA JOÃO DE DEUS





## CÂMARA MUNICIPAL DE ÉVORA

### 6. PRAÇA JOAQUIM ANTÓNIO DE AGUIAR

